

## MYC-YA15XC-T CPU Module

- *ST STM32MP1 MPU based on 650MHz Single or Dual Arm Cortex-A7 and 209MHz Cortex-M4 Cores*
- *256MB/512MB DDR3L, 256MB Nand Flash/4GB eMMC Flash, 32KB EEPROM*
- *Power Management IC (PMIC)*
- *1.0mm pitch 148-pin Stamp Hole Expansion Interface*
- *Supports Running Linux OS*

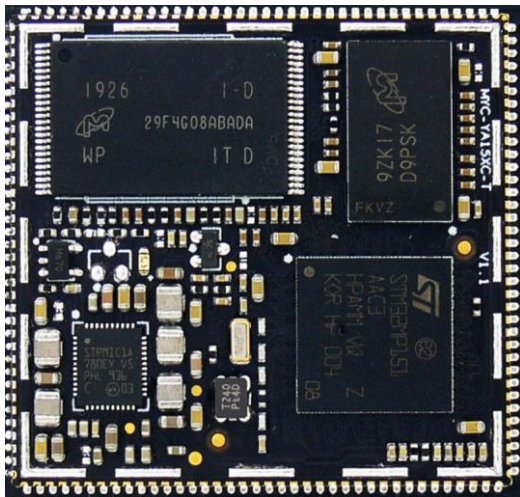


Figure 1-1 MYC-YA15XC-T CPU Module (delivered with shielding cover by default)

Measuring only 39mm by 37mm, the [MYC-YA15XC-T CPU Module](#) is MYiR's another System-on Module (SoM) based on [ST STM32MP1](#) series processors after the first release of the [MYC-YA157C CPU Module](#). The new MYC-Y157XC-T module has integrated the STM32MP151AAC3T processor by default and a dedicated Power Management IC [STPMIC1](#) also from STMicroelectronics. It has onboard DDR3L, Nand Flash or eMMC and 32KB EEPROM. A number of peripherals and IO signals are brought out through 1.0 mm pitch 148-pin stamp-hole (Castellated-Hole) expansion interface to make the module an excellent embedded controller for applications like industrial control, consumer electronics, smart home, medical and etc. The [MYC-YA15XC-T](#) is running Linux with provided 5.4.31 kernel and many drivers in source code.

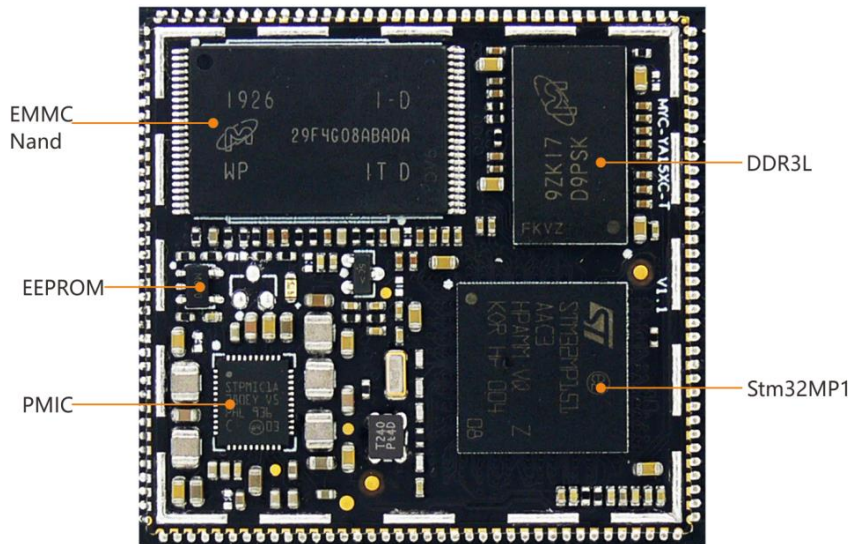


Figure 1-2 MYC-YA15XC-T CPU Module

The [MYD-YA15XC-T development board](#) is designed based on the [MYC-YA15XC-T CPU Module](#) and has extended various peripherals to the base board through connectors including Debug serial port, USB Type-C DRP, USB2.0 HOST, Gigabit Ethernet, Micro SD Card Slot, LCD, Camera, etc. A number of IO signals are brought out through pin headers as well. The [MYD-YA15XC-T development board](#) is delivered with one Quick Start Guide, one USB Type-C cable, one DC power jack plug adapter and one 5V/2A power adapter to enable users to start

rapid development when getting the board out-of-box. MYiR also offers [MY-CAM011B Camera Module](#), [MY-RGB2HDMI Module](#), [MY-WF005S WiFi/BT Module](#), [MY-WIREDCOM RPI Module](#) (RS232/RS485/CAN) and [MY-TFT070CV2 LCD Module](#) as options for the board.

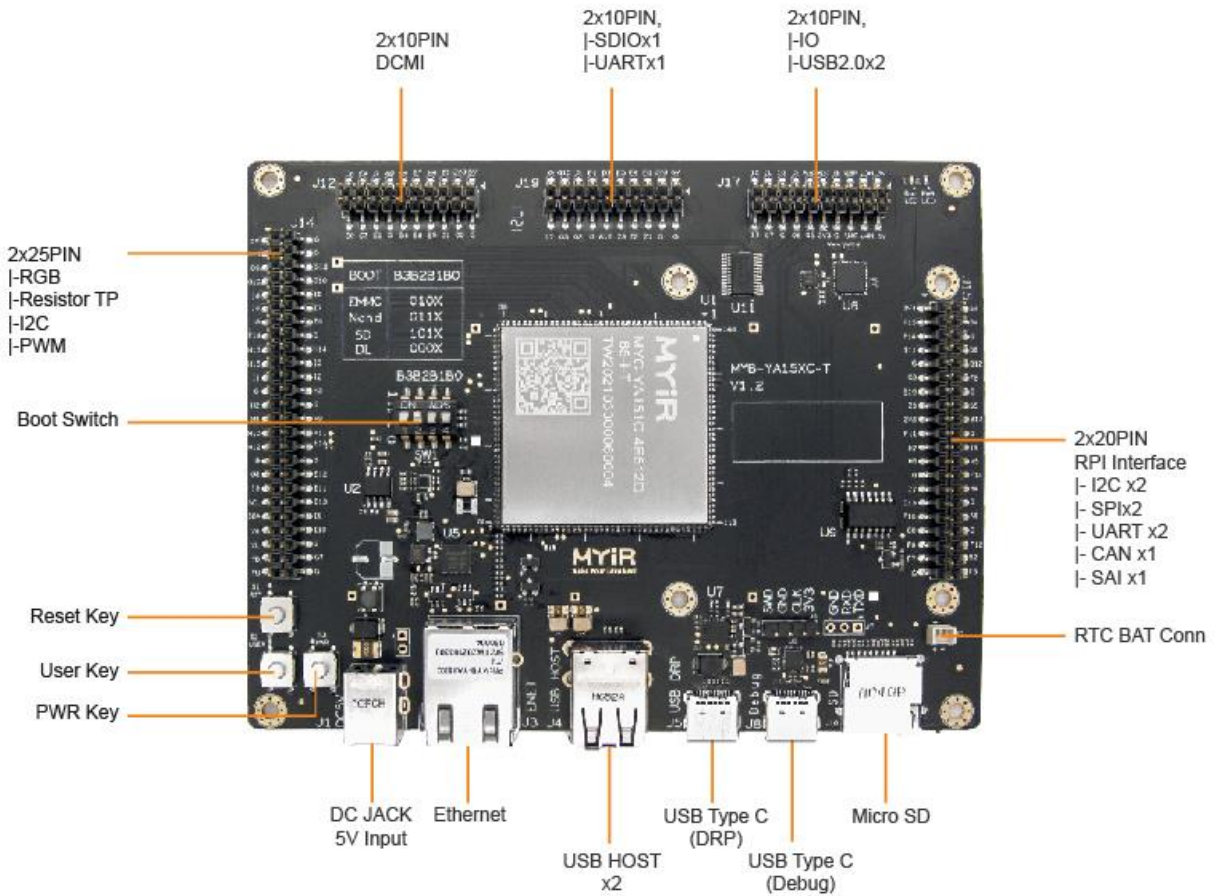


Figure 1-3 MYD-YA15XC-T Development Board Top-view

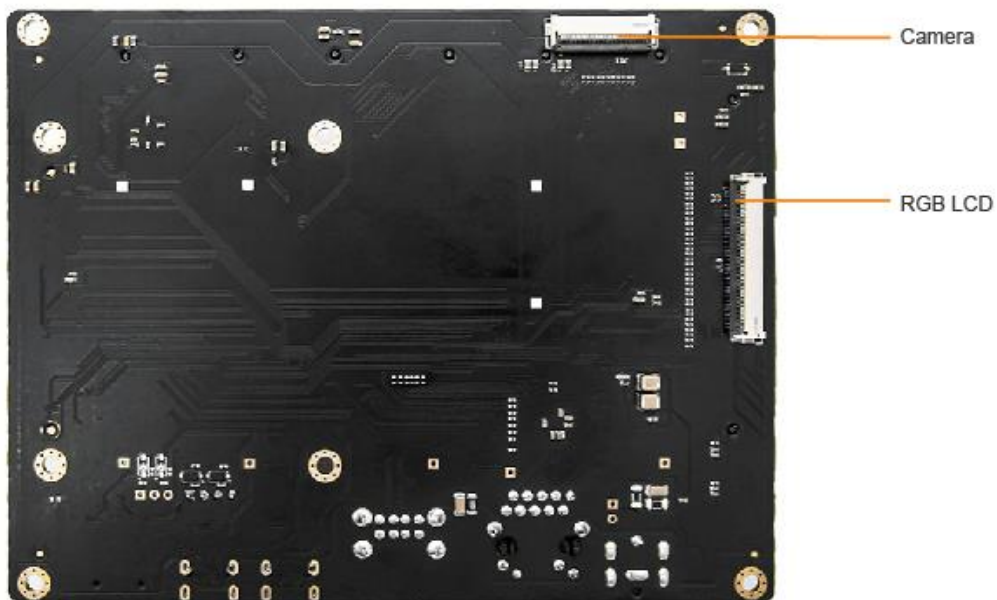


Figure 1-4 MYD-YA15XC-T Development Board Bottom-view

**Hardware Specification**

The MYC-YA15XC-T CPU Module is using STMicroelectronics [STM32MP151AAC3T](#) Microprocessor with 12 x 12 mm, 0.5 mm pitch, TFBGA361 package which is among the [STM32MP1 Series](#). The STM32MP1 series is based on a heterogeneous single or dual Arm Cortex-A7 and Cortex-M4 cores architecture, strengthening its ability to support multiple and flexible applications, achieving the best performance and power figures at any time. The Cortex-A7 core provides access to open-source operating systems (Linux/Android) while the Cortex-M4 core leverages the STM32 MCU ecosystem. It is available in 3 different lines which are pin-to-pin compatible:

- [STM32MP157](#): Dual Cortex-A7 cores @ 650 MHz, Cortex-M4 core @ 209 MHz, 3D GPU, DSI display interface and CAN FD
  - [STM32MP153](#): Dual Cortex-A7 cores @ 650 MHz, Cortex-M4 core @ 209 MHz and CAN FD
  - [STM32MP151](#): Single Cortex-A7 core @ 650 MHz, Cortex-M4 core @ 209 MHz
- Each line comes with a security option (cryptography & secure boot)

ACCELERATION	STM32 MP1	Cortex®-A7 core	f <sub>cpu</sub> (MHz)	Cortex®-M4 core	f <sub>mcu</sub> (MHz)	3D GPU	f <sub>gpu</sub> (MHz)	HW Crypto	FD-CAN	MIP1®-DSI
		Product lines								
<b>CONNECTIVITY</b> <ul style="list-style-type: none"> <li>• 2 x USB2.0 HS Host</li> <li>• USB2.0 OTG FS/HS</li> <li>• 3 x SDMMC/SDIO</li> <li>• USART, UART, SPI, I<sup>2</sup>C</li> <li>• 2 x (TT)FD-CAN2.0*</li> <li>• Gigabit Ethernet IEEE 1588***</li> <li>• FMC (NAND Flash)</li> <li>• Camera VF</li> <li>• Dual mode Quad-SPI</li> <li>• DSI 2 Gbit/s*</li> </ul>	STM32MP151A	1	650	1	209	-	-	-	-	-
	STM32MP151C							•		
	STM32MP153A	2	650	1	209	-	-	-	2	-
	STM32MP153C								•	
	STM32MP157A	2	650	1	209	•	533	-	2	•
	STM32MP157C								•	

Notes:  
 \* Not available in all product lines  
 \*\* 16/32-bit for LFBGA448 and TFBGA361 packages, 16-bit only for LFBGA354 and TFBGA257 packages  
 \*\*\* 10/100M Ethernet only for LFBGA354 and TFBGA257 packages

Figure 1-5 STM32MP1 Series Processors

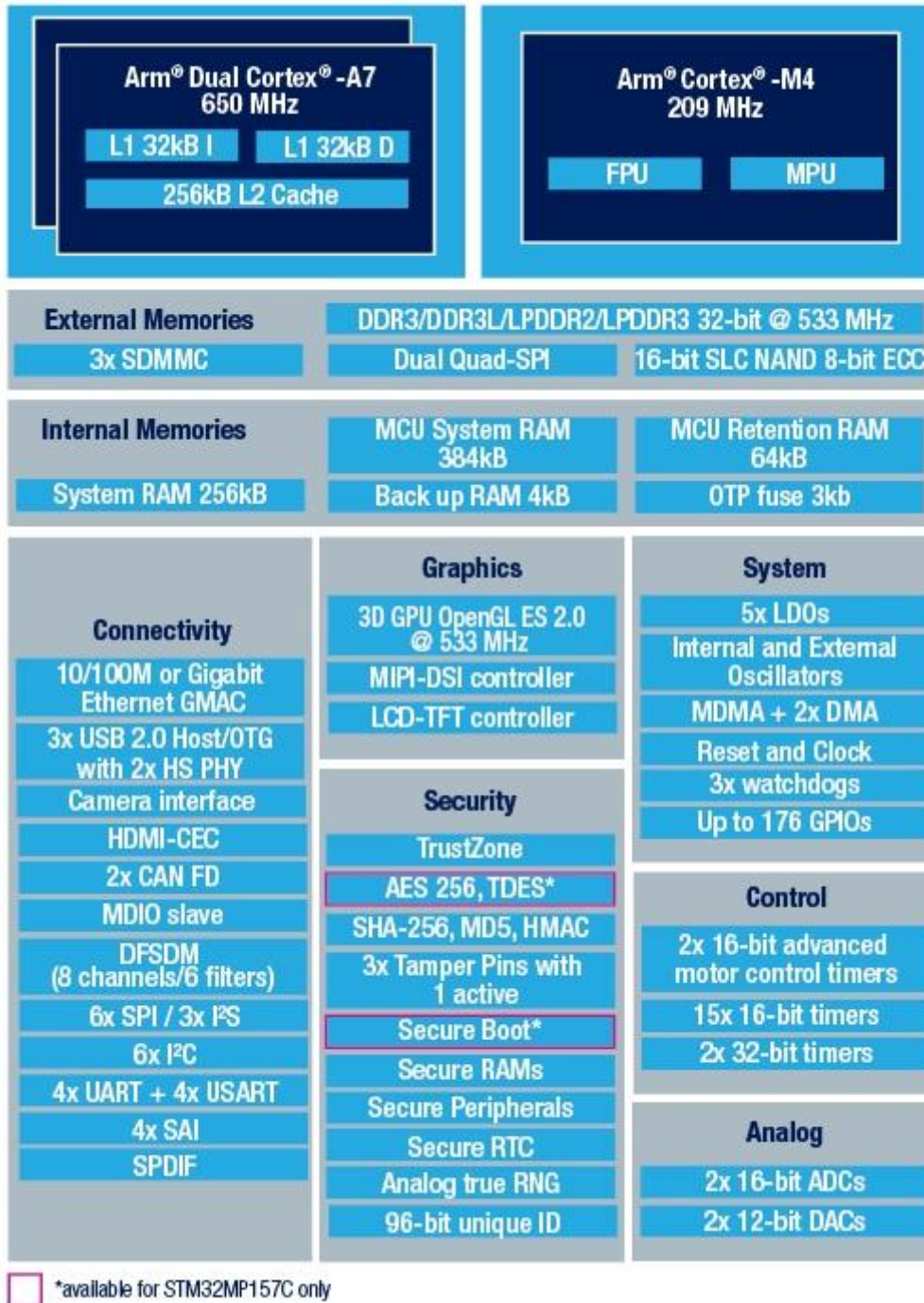


Figure 1-6 STM32MP15X Block Diagram

## Mechanical Parameters

- Dimensions: 39mm x 37mm
- PCB Layers: 10-layer design
- Power supply: +5V/0.5A
- Working temperature: 0~70 Celsius (commercial grade) or 40~85 Celsius (industrial grade)

## Processor

- 650MHz STMicroelectronics STM32MP151AAC3T Microprocessor (STM32MP153AAC3T and STM32MP157AAC3T are compatible and can be customized)  
The STM32MP1 series is available in 3 different lines which are pin-to-pin compatible:
  - STM32MP151: Single Cortex-A7 core up to @ 800 MHz, Cortex-M4 core @ 209 MHz
  - STM32MP153: Dual Cortex-A7 cores up to @ 800 MHz, Cortex-M4 core @ 209 MHz and CAN FD
  - STM32MP157: Dual Cortex-A7 cores up to @ 800 MHz, Cortex-M4 core @ 209 MHz, 3D GPU, DSI display interface and CAN FD

## Memory and Storage

- 256MB DDR3L, 256MB Nand Flash / 512MB DDR3L, 4GB eMMC Flash
- 32KB EEPROM

## Peripherals and Signals Routed to Pins

- Power Management IC (STPMIC1APQR)
- 1.0mm pitch 148-pin Stamp Hole Expansion Interface
  - 8 x Serial ports
  - 5 x I2C
  - 4 x SPI
  - 16 x ADC
  - 2 x SDIO
  - 1 x RGMII
  - 2 x USB Host or 1 x USB Host plus 1 x USB OTG
  - 2 x CAN (only for STM32MP153 and STM32MP157)
  - 5 x LPTIM and 10 TIM
  - 1 x RGB Interface (supports 16-/18-/24-bit, resolution up to 1366 x 768 @60fps)
  - Up to 109 GPIOs

*Note: the peripheral signals brought out to the expansion interface are listed in maximum number. Some signals are reused. Please refer to the processor datasheet and the CPU Module pinout description file.*

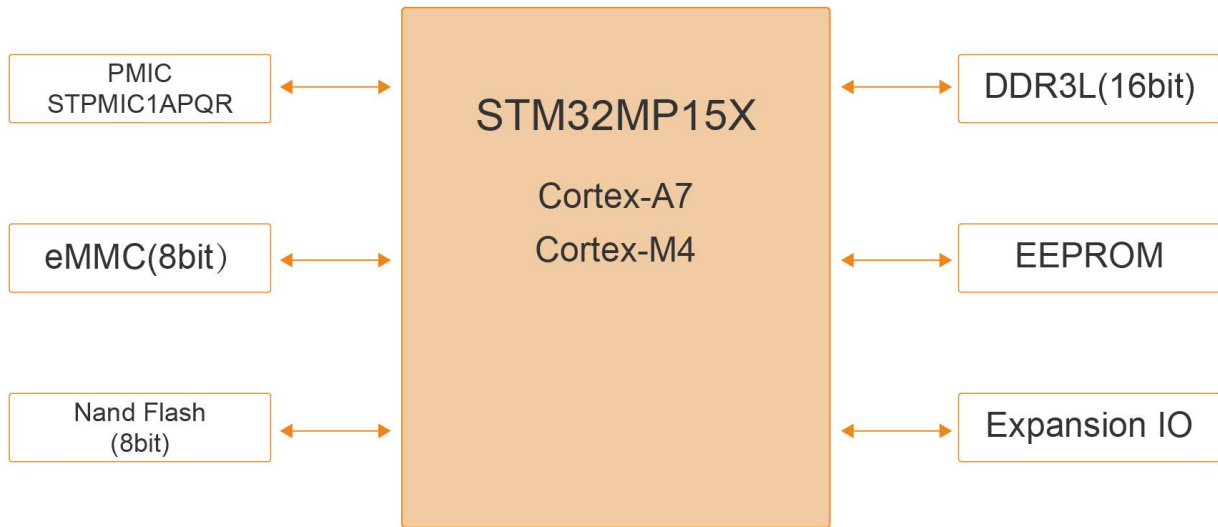


Figure 1-7 MYC-YA15XC-T CPU Module Function Block Diagram

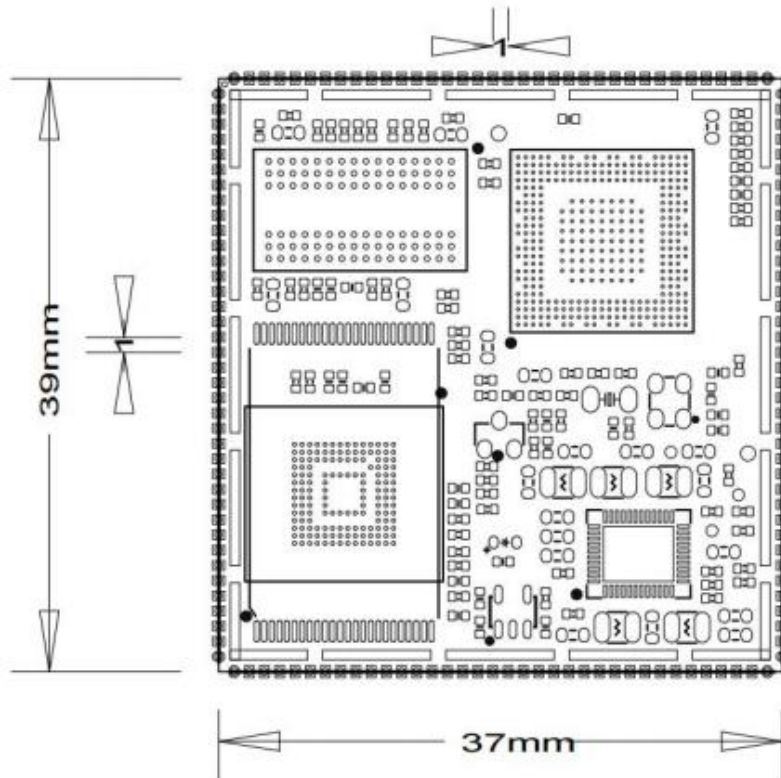


Figure 1-8 MYC-YA15XC-T Dimensions Chart

**Software Features**

Item	Features	Description	Source Code
Bootstrap program	TF-A-2.2	Arm Trusted Firmware	YES
Bootloader	U-boot-2020.01	Kernel bootstrap	YES
Linux kernel	Linux-5.4.31	Customized based on ST kernel_5.4.31 version for MYD-YA15XC-T	YES
Drivers	NAND	Nand Flash driver	YES
	MMC	eMMC driver	YES
	USB Host	USB Host driver	YES
	USB OTG	USB OTG driver	YES
	I2C	I2C driver	YES
	SPI	SPI driver	YES
	Ethernet	10M/100M/1000M Ethernet driver	YES
	RS232/RS485/Uart	Serial driver	YES
	LCD	LCD driver, supports MYiR's 7-inch LCD with 800 x 480 pixels resolution	YES
	Touch	Capacitive touch screen driver	YES
	RTC	RTC driver	YES
	GPIO key	Key driver	YES
	GPIO LED	LED driver	YES
	CAN	CAN Bus driver	YES
	HDMI	HDMI driver	YES
WiFi & BT	WiFi/BT driver (SDIO)	YES	
File system	myir-image-full	Full-featured file system with MEasy HMI V2.0	YES
	myir-image-core	Simplified system with core features	YES
Tools	STM32CubeProgrammer	ST programmer software	BIN
	STM32CubeMX	ST configuration integration tool	BIN
	STM32CubeIDE	ST development tool	BIN
Applications	GPIO LED	LED example	YES
	GPIO KEY	KEY example	YES
	NET	TCP/IP Socket C/S example	YES
	RTC	RTC example	YES
	RS232	RS232 example	YES
	RS485	RS485 example	YES
	CAN	CAN example	YES
	LCD	LCD Display example	YES
	Camera	Camera Display example	YES
	UART	UART example	YES
HMI 2,0	MYiR-MEeasy_hmi 2.0	YES	
Compiler Tool Chain	Cross compiler	arm-ostl-linux-gnueabi-gcc 9.3.0	BINARY
Yocto Project™	Yocto	Dunfell 3.1	YES

*Table 1-1 MYD-YA157C Software Features*

**Order Information**

Product Item	Part No.	Packing List
MYC-YA15XC-T CPU Module	MYC-YA151C-4E512D-65-C-T	<ul style="list-style-type: none"> <li>➤ One MYC-YA15XC-T CPU Module</li> </ul>
	MYC-YA151C-4E512D-65-I-T	
	MYC-YA151C-256N256D-65-C-T	
	MYC-YA151C-256N256D-65-I-T	
MYD-YA15XC-T Development Board	MYD-YA151C-256N256D-65-I-T	<ul style="list-style-type: none"> <li>➤ One MYD-YA15XC-T Development Board (including MYC-YA15XC-T CPU Module)</li> <li>➤ One 5V/2A Power adapter</li> <li>➤ One USB Type-C cable</li> <li>➤ One DC power jack plug adapter</li> <li>➤ One Quick Start Guide</li> </ul>
	MYD-YA151C-4E512D-65-I-T	
MY-LCD70TP-C LCD Module (with capacitive touch screen)	MY-TFT070CV2	<b>Add-on Options</b> <ul style="list-style-type: none"> <li>➤ MY-TFT070CV2 LCD Module</li> <li>➤ MY-RGB2HDMI Module</li> <li>➤ MY-WIREDCOM RPI Module</li> <li>➤ MY-WF005S WiFi/BT Module</li> <li>➤ MY-CAM011B Camera Module</li> </ul>
MY-RGB2HDMI RGB to HDMI Module	MY-RGB2HDMI	
MY-WIREDCOM RPI Module (RS232/RS485/CAN)	MY-WIREDCOM	
MY-WF005S WiFi/BT Module	MY-WF005S	
MY-CAM011B Camera Module	MY-CAM011B	


**MYiR Tech Limited**

Room 04, 6th Floor, Building No.2, Fada Road, Yunli Smart Park,  
Bantian, Longgang District, Shenzhen, Guangdong, China 518129

E-mail: [sales@myirtech.com](mailto:sales@myirtech.com)

Phone: +86-755-22984836

Fax: +86-755-25532724

Website: <http://www.myirtech.com>